

Help Protect the South Branch Watershed – Join Today!

Membership Benefits:

- Membership packet, card, and window decal
- Quarterly newsletter, The Current
- Discounts to SBWA events
- Acknowledgment in newsletter
- One free coliform well test analysis plus reduced prices on other tests (Family +)
- Recognition in Annual Report (Supporter +)
- Recognition at Annual Dinner (River Watch Club)
- Signed photograph of the South Branch (Stream Steward +)

Membership Levels:

- | | |
|--|--|
| <input type="checkbox"/> \$100 Supporter | River Watch Club: |
| <input type="checkbox"/> \$50 Family | <input type="checkbox"/> \$1,000 River Steward |
| <input type="checkbox"/> \$25 Student | <input type="checkbox"/> \$500 Stream Steward |
| <input type="checkbox"/> Other | <input type="checkbox"/> \$250 Site Steward |
| | <input type="checkbox"/> \$150 Friend of the River |

Name: _____

Address: _____

City, State, Zip: _____

Phone: _____

E-mail: _____

- My company will match my gift. Enclosed is the matching gift form.
- Please send information about bequests and planned giving opportunities.

I am interested in volunteering:

- Stream Monitoring Events
- Stream Clean-Ups Office/Admin Projects

Please make checks payable to: SBWA.

SBWA will not share your contact info with others.

SBWA is a tax exempt organization under section 501(c)(3) of the Internal Revenue Code. Contributions may be deducted as provided by law.

Office Use Only: Fin. Db. Ltr. Ck No: _____ Date: _____

Volunteer Opportunities

The South Branch Watershed Association welcomes your talents, skills, and enthusiasm. Join us and share your time with others who care about the rivers and streams in the watershed. You'll feel good in knowing that you helped to protect and restore the health of the watershed in your community. Volunteer activities include:

- Stream Clean-Ups
- Stream Monitoring
- Education Programs
- Fund Raising Events
- Facility Upkeep
- Stream Restoration
- Outreach Events
- Office Assistance
- Grant Writing
- Special Projects

Give us a call today to find out how you can get in on the action and have fun along the way!



A volunteer conducting a visual survey at one of our stream monitoring sites.

Visit or call us at:

South Branch Watershed Association
Lechner House
41 Lilac Drive
Flemington, NJ 08822

Phone: 908-782-0422

Fax: 908-782-4473

E-mail: info@sbwa.org

Web: www.sbwa.org

Ten Things You Can Do NOW to Protect and Improve the South Branch Watershed

- 1. JOIN THE SOUTH BRANCH WATERSHED ASSOCIATION!**
- 2. Have your well water tested annually for coliform.** Test for other pollutants, such as lead or nitrates, if you have a reason to suspect they might be present.
- 3. Reduce or eliminate the use of pesticides, herbicides and fertilizer.** Use organic alternatives. Keep your lawn area small and plant the rest of your property with native trees, shrubs, and flowers that require little or no water, pesticides, or fertilizer.
- 4. Keep pollutants out of storm drains.** Trash, leaves, grass clippings, sand and salt, pet waste, oil, detergents, and other materials will empty directly into a local creek if they enter a storm drain.
- 5. Properly dispose of household hazardous wastes.** Check with your local municipality or county to find out where to take your unwanted hazardous products, such as household cleaners, lawn and garden chemicals, paint, and motor oil.
- 6. Clean up pet waste.** It's the LAW. Wrap up and dispose of waste in the trash.
- 7. Have your septic system inspected and pumped regularly.** Every two to five years depending on its size and usage.
- 8. Check for and repair leaky faucets.** A dripping faucet can waste 2,000 gallons of water in one year. If you paid the same price for this water as you would on average for half liter bottles of water from the store, that would equate to \$13,000 per year down the drain!
- 9. Install low-flow showerheads, faucets, and toilets, and purchase only water efficient models of dishwashers and clothes washers.** See number eight above for reason!
- 10. Reduce, Reuse, Recycle!!!** Buy fewer items. Choose items with less packaging. Give away or sell used items that you no longer want.

For more information, visit us at:

www.sbwa.org



The South Branch Watershed Association protects and enhances the water resources of the South Branch of the Raritan River and its watershed by means of community participation, local leadership, and innovation, in order to improve the health of the human and natural environments.

www.sbwa.org

South Branch Watershed Association

Established in 1959. One of the oldest and largest watershed associations in New Jersey.

Our Programs

• Environmental Education

- The Waterways Stewardship Project provides hands-on in-class, in-field, and computer-based watershed education to local students.
- Teacher workshops.
- Presentations at conferences and for local groups, clubs, etc.

• Volunteer Stream Monitoring

- Biological and habitat monitoring of local rivers and streams by volunteers.

• Annual Stream Clean-Up

- Hundreds of volunteers remove tons of trash from in and around local rivers, streams, and reservoirs.

• Community Well Testing

- Free coliform test for SBWA members.
- Reduced rates for SBWA members on tests for a variety of other potential contaminants.
- Testing offered for all watershed residents through a partnership with local environmental commissions.

• Stream Restoration

- Comprehensive stream restoration projects.
- Invasive plant removal.
- Work with businesses, farms, golf courses, and residents to improve water quality.

• Hunterdon County Green Table

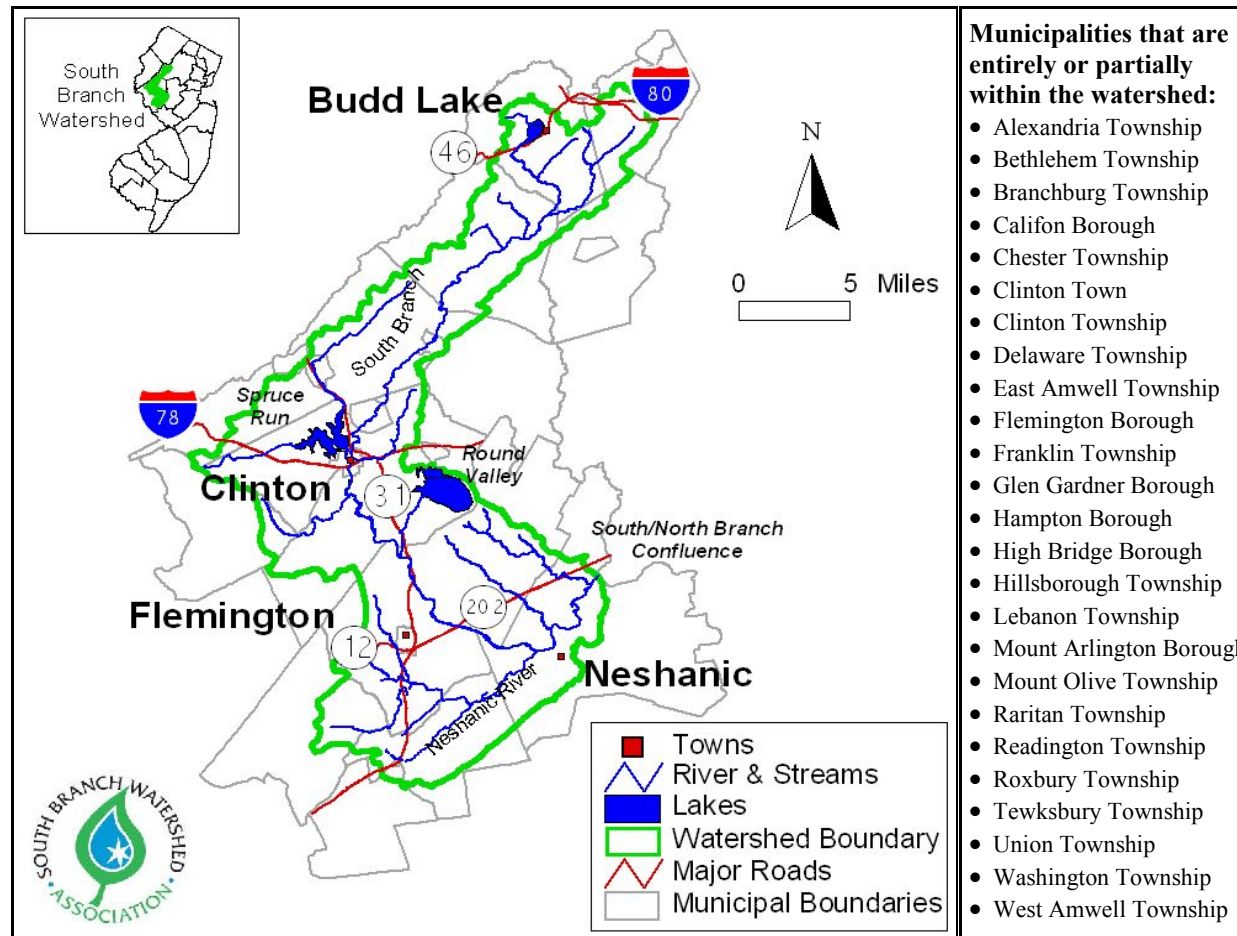
- Forum on timely local environmental topics.

• Open Space Preservation

- Partner with other non-profits, municipalities, and state agencies on local land preservation.

These efforts would not be possible without the help of our dedicated volunteers. SBWA is always looking for people who are ready to help! Contact us to volunteer.

South Branch Watershed



What is a Watershed?

A watershed is an area of land that drains into the same body of water, such as a stream, river, lake, or bay. It is separated from other watersheds by higher elevations of land like hills and mountains. A watershed can be any size. Many smaller watersheds often make up a larger watershed. No matter where you are on earth, you are in at least one watershed!

The South Branch watershed is 276 square miles.

It includes parts of Hunterdon, Somerset, and Morris counties, and 25 municipalities. The South Branch of the Raritan River begins at Budd Lake and flows 51 miles down to Branchburg, where it joins the North Branch to become the main stem of the Raritan River.

Protecting the water quality in the watershed benefits the people, plants, and animals that live here. Get involved and join the SBWA today!

www.sbwa.org

SBWA Activities Offer Many Different Ways for You to **Become Involved** in the Watershed



Cleaning up the local waterways during our Annual Stream Clean-Up.



Planting tree saplings during a local stream restoration.



Educating local school students about water quality in the watershed.